

# AxI 50i - maximum printing flexibility

The AxI 50i continuous ink jet (CIJ) printer can print high quality codes on virtually any surface and product; whether flat, round, uneven or moving.

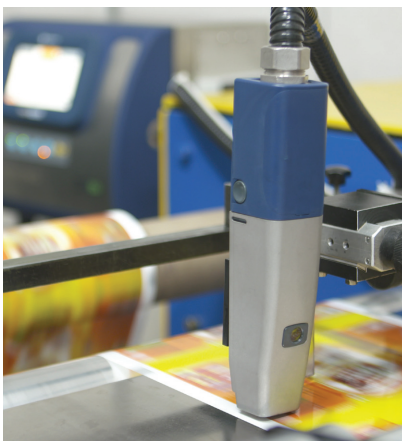
The AxI 50i is compatible with Industry 4.0 standards. Connecting to Domino Cloud enables remote diagnostics and 24/7 visibility of your printers' performance. The integrated touchscreen user interface provides a class-leading user experience.

Domino's service-free ink system with i-Pulse printhead technology utilising Domino-developed inks provides clear, readable text, graphics and barcodes while ensuring regulatory compliance.



## Designed for maximum uptime

- ◆ Operation is simple through single button start, dynamic on-board monitoring & control to ensure excellent prints even in fluctuating ambient temperatures, and consumable changes in-run.
- ◆ The AxI 50i is service-free; only the iTechx module (ITM) needs to be replaced once annually, which is a less-than-ten-minutes operator task.
- ◆ Coding automation and integration into your ERP and MES business systems are supported. Connect to Domino Cloud to benefit from remote printer performance overviews and diagnostics.



## i-Pulse printhead technology

- ◆ Printheads start up first time even after extended shutdowns thanks to Domino's unique nozzle-sealing technology.
- ◆ Best readability and best reliability at faster speed in a higher 9-drop resolution (versus traditional 7 drops) plus saving up to 24% in ink usage result from optimised ink drop formation.
- ◆ The durable 60µ printhead delivers consistent code quality.

## Adding value to your product

- ◆ Domino supplies a range of inks manufactured to GMP (Good Manufacturing Practice) which are compliant with leading global legislation for food packaging.
- ◆ Our inks offer lasting adhesion, lightfastness and high contrast even on difficult substrates (e.g. polyolefins) and after harsh post-print processes.
- ◆ Environmental-friendly options, reduced ink consumption, optimised packaging and fully-depleting cartridges reduce waste and ecological footprint.

[www.wichmannsystems.com](http://www.wichmannsystems.com)



# A complete solution



Our services are designed to provide operational insight so you can eliminate downtime and maximise production efficiency

## Operational support

Ensure every code that leaves your factory is present and correct, and free up operator time. With the R-Series, Domino's range of vision control systems, you can automate your code inspection to validate code presence, placement, and readability.

## Automatic code inspection

Continuous production can be maintained with optimum line availability as there is no need for specialist skills or tools to replace the i-Tech Module. CleanFill technology and colour-coded, one-fit consumables eliminate the risk of spillage or mess.

## Control software

Minimise errors using Domino's QuickDesign software. Control your product codes from a central location and streamline product changeovers. QuickDesign uses standard communication protocols and can be integrated into existing ERP systems.

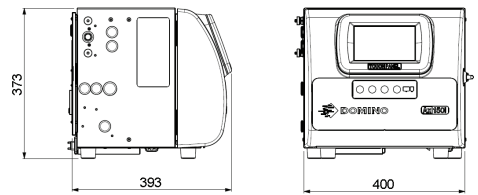
## Smart production

Gain operational insight by connecting your printer to Domino Cloud. Obtain production analytics dashboards and receive system error alerts. Domino Cloud provides you with the information you need to run your operations more efficiently.

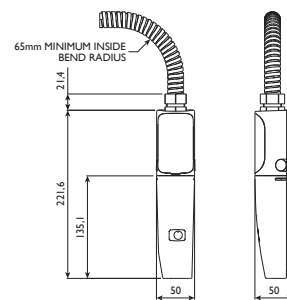


## Technical specification AxI50i

Printing Specification	
Printhead nozzles	60µm
Speed – 1 line, 5 dot characters(m/s)*	5,1
Dot size(mm)**	0.31
Print heights (single print head)	Up to 32 dots/20mm
Supported code formats	full unicode support text, graphics, 1-D, 2-D codes
Ownership Specification	
User interface	7" Touchscreen
Conduit length	3m
Printhead type	Straight
Software	<b>QuickStep 3</b>
Comms ports	Cabinet USB port (x1); Ethernet RJ45 port (x1)
Printer status monitoring	4 stage beacon output (x1); 3 stage alarm output (x1)
Cartridge replacement (Ink and make-up)	Auto recognition; 20 second operator task; no line stop required
Servicing – ITM replacement	Sub 10 minute operator task. Line stop required
Service interval***	Typically every 12 months
Material	304 stainless steel cabinet (5 sides) - nylon door; IP55
Consumables****	
Inks	Wide range of black and coloured inks including options for food packaging, colour change, industrial, UV-fluorescent
Ink cartridge volume	825ml
Make-up cartridge volume	1200ml
Optional Hardware Packs*****	
RS232 pack	RS232 port (x1)
GPIO pack	I/O – 4 inputs/4 outputs (x1)



60µ / 75µ printhead



## Logos and 2D Codes



## Multi Language and Mixed Fonts



\*Speed quoted at the following characters per inch ---- 60µm = 10 characters. \*\*Dots size may vary depending on substrate type. \*\*\*Service interval is ink type dependent. \*\*\*\*This product has a Quality Management System that means that it will only work with Domino circuitry, and it uses dynamic security measures to block non-Domino circuitry from being used. From time to time updates to the circuitry will be issued by Domino to maintain the effectiveness of the Quality Management System. \*\*\*\*\*May vary per sales region.



## Contact us

W: [www.wichmannsystems.com](http://www.wichmannsystems.com)

T: +254 742 923 711

E: [Contact@wichmannsystems.com](mailto:Contact@wichmannsystems.com)